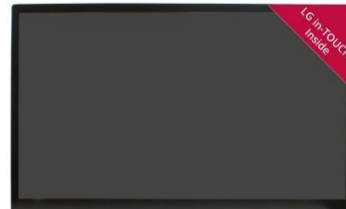


27" IPS Fanless Touch Screen, in-cell Touch Technology Display

Features

1. 27" 300 nits TFT LCD with LED backlight
2. LG in-cell 10-points Multi Capacitive Touch
3. Using in-cell Touch technology which combines the display and touch functions for small to large size applications, support High Touch Performance and matching accuracy
4. A true Flat and Slim Design, Clear Image, support Cover-Glass Elimination
5. 1* VGA, 1* HDMI, 1* DP input
6. Support Built-in Speakers
7. OSD Multilanguage function
8. Support Anti-glare and Anti-fingerprint
9. Front IP65 for protection against water and dust
10. Support VESA Mounting



in-cell Touch
High Performance

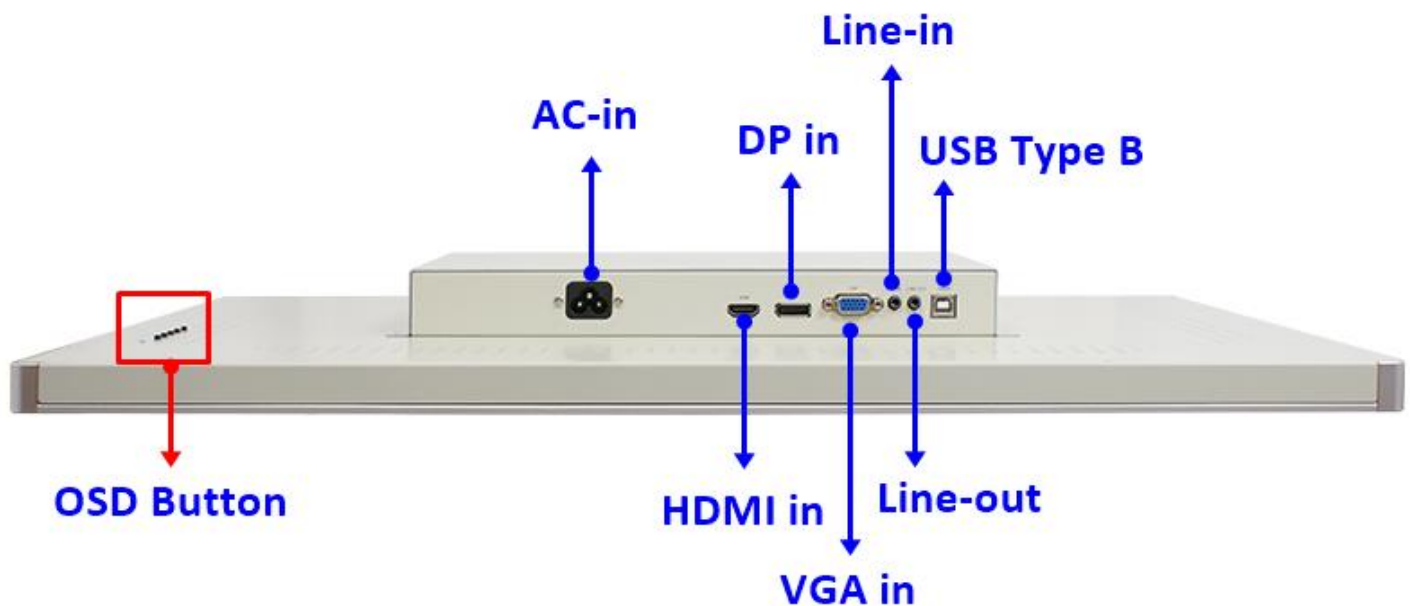


Low Reflection
Clear Image



in-Touch Glove
Technology

I/O Diagram



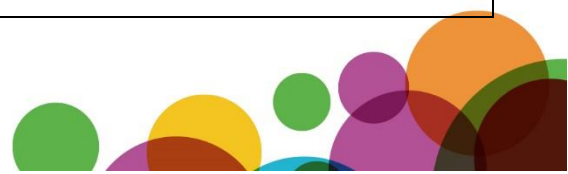
Specifications

Model	<ul style="list-style-type: none"> MPC270CW-DF69
Main System	<ul style="list-style-type: none"> Mstar TSUMF52GDG-1 Support 2* 3W Speaker
Display	<ul style="list-style-type: none"> IP65, NEMA 4 rugged protection, metal front bezel 27" With LED Backlight 300 nits 16.7M display color 1920 x 1080 @60Hz resolution 178°/178° viewing angle (H/V) 0.1038 x 0.1038mm pixel pitch 16:9 aspect ratio 1000:1 contrast ratio 9ms response time
Touch Screen	<ul style="list-style-type: none"> Projected capacitive type (LG in-cell Touch) High Touch Performance Strengthened Polarizer for in-TOUCH High Picture Quality Low Reflection / Deep Black No deterioration of PQ caused by TOUCH Film Wide Viewing Angle Low color Shift Stable Touch without Flash
Glass	<ul style="list-style-type: none"> Support Anti-glare Support Anti-fingerprint Surface Hardness $\geq 6H$ (JIS-5400)
I/O Connector	<ul style="list-style-type: none"> 1* USB2.0 (Type B) 1* HDMI 1* VGA 1* DP 1* Line-in 1* Line-out 1* AC-in (110~240V)
OSD Control	<ul style="list-style-type: none"> AUTO (VGA/DP/HDMI Choose) UP (Volume add and up key) DOWN (Volume diminish and down key) MENU (Function key) ON/OFF (Power key) Power LED
Memory	<ul style="list-style-type: none"> N/A
Case	<ul style="list-style-type: none"> Aluminum panel Iron case White color
Power	<ul style="list-style-type: none"> AC: 110~240V Consumption: 32.5W
Compliance	<ul style="list-style-type: none"> CE, FCC, IP65 (Front) - Option
Safety	<ul style="list-style-type: none"> Shock: 1ms duration Vibration: 5~500Hz/1 Grms
Dimensions	<ul style="list-style-type: none"> Screen: 631.30 x 374.71 x 55.0mm
Temperature	<ul style="list-style-type: none"> Operating Temperature: -10 ~ 50° C Storage Temperature: -20 ~ 70° C Humidity: 10% ~ 90% RH @40°C (non-condensing)
Warranty	1 Years Limited Warranty

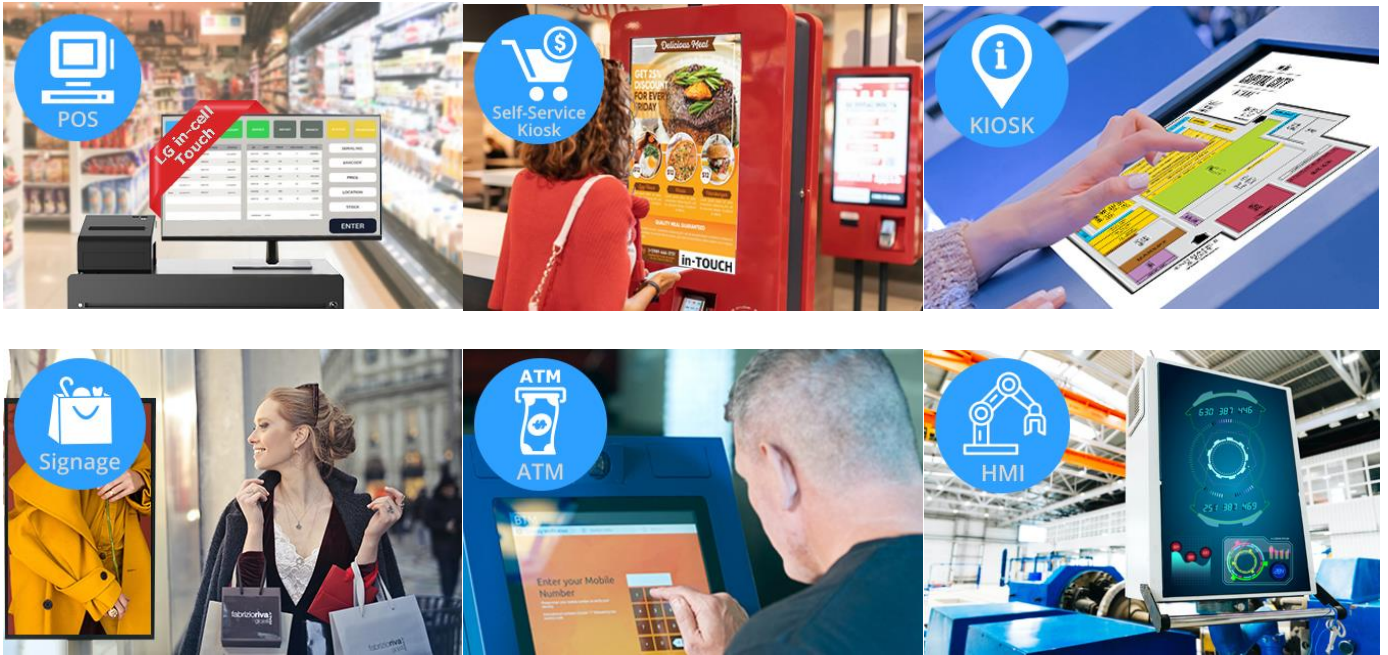
* Specifications subject to change without notice, not responsible for typographical errors. Does not include HDD or OS.

Standard Accessories

Part Number	Description
MPC270CW-DF69	MPC270CW-DF69 Touch Display
HLMCAHDM1500-F	HDMI Cable
HLMCAUSB1800-1F	USB Type B Cable
Change according to shipping area	Power cord



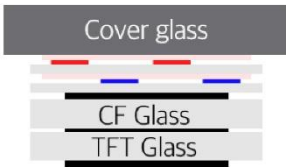
Application



Why LG in-TOUCH

01 Strengthened Polarizer for in-TOUCH

Conventional



in-TOUCH



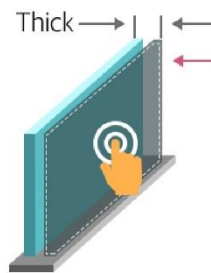
- By eliminating Cover Glass allow Touch TV Design "Slim & Light"
- Extra mechanical design is required for attaching thick and heavy C/G

Enhanced Surface Hardness of Polarizer

	Normal POL	in-TOUCH POL
Pencil scratch hardness	2H	4H
Abrasion Resistance 1)	10cycles	800cycles

1) Based on testing with 'Steel wool'

Conventional



in-TOUCH



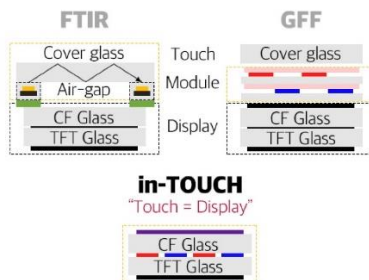
02 High Touch Performance

- Touch & Display Matching Accuracy



03 Simple SCM & Assembly

- Simplified Assembly & Supply Chain
- Touch Module + Touch Board + Display
- Mechanical structure simplified for assembly



04 High Picture Quality

- Low Reflection / Deep Black
- No deterioration of PQ caused by Touch Film
- Wide Viewing Angle
- Low Color Shift
- Stable Touch without Flash



Mechanical Drawings (Unit=mm)

