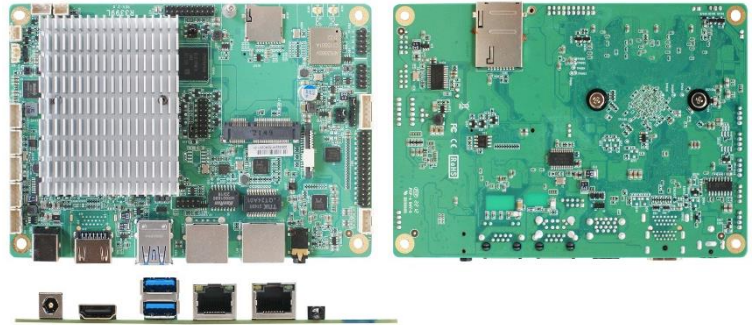




JR3399XH-2C

Rockchip® ARM Cortex A72+A53 RK3399, 2* RJ45

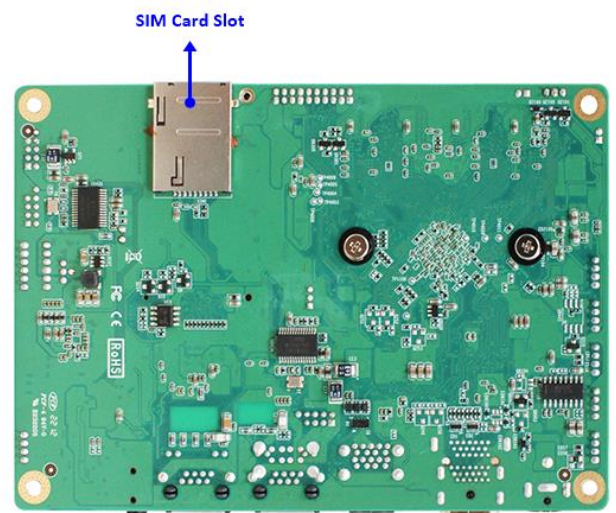
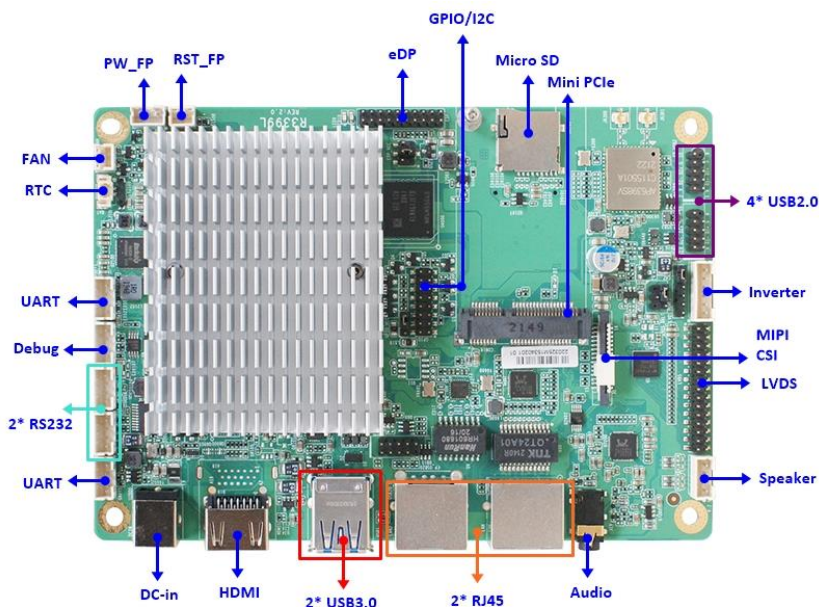
1. Rockchip® ARM Cortex A72(Dual Core 1.8GHz) + Cortex A53(Quad Core 1.4GHz)
2. On board 1333/2GB DDR3L DRAM
3. On board 16G Flash ROM Max 64GB
4. Support WIFI and BlueTooth
5. 1* Realtek GbE, 1* Realtek 10/100Mbps LAN
6. 2* UART, 2* RS232, 2* USB3.0, 6* USB2.0, 1* OTG (Co-lay USB3.0)
7. 1* HDMI2.0, 1* eDP, 1* 24-bits Dual CH LVDS
8. Support 4K H.264/H.265 video decoding, up to 60fp 10bits coding
9. Support 1080P H.264 format video encoding
10. 1* Mini PCIe (Full size), 1* Micro SD Max. 256GB, 1* SIM Card Socket
11. Support Android 7.1, Debian9.0



Application

Digital Signage / Automation Equipment

I/O Diagram



Specifications

Model

JR3399XH-2C

Processor System

- Rockchip® ARM Cortex A72 (Dual Core) +Cortex A53 (Quad Core)
- A72 up to 1.8GHz, A53 up to 1.4GHz
- Rockchip® RK808-D PMU

Memory

Onboard DDR3L 1333MHz 2GB

Ethernet

- 1* Realtek RTL8211E GbE
- 1* Realtek RTL8152B-VB-CG 10/100Mbps
- 1* AMPAK AP6398SV 802.11 a/b/g/n/ac 2.4/5G WIFI and BT-V5.0

Storage

16GB Flash ROM (Max 64GB)

Internal Connector

- 6* USB2.0
- 2* UART, 2* RS232, 1* Debug
- 1* LVDS / Inverter
- 1* eDP
- 1* MIPI CSI
- 1* Speaker(3W AMP)
- 1* GPIO (8 bit)
- 1* I2C
- 1* Power BT(Header)
- 1* Reset BT(Header)
- 1* CPU FAN(Header)

Power

12V DC-in (PWR Con)

- AT : Directly PWR on as Power input ready

- ATX: Press Button to PWR on after Power input ready

Temperature

- Operating: -10°C ~ 60°C
- Storage: -20°C ~ 70°C

Form Factor

102 * 146mm

Expansion Slot

- 1* Micro SD
- 1* Mini PCIe (USB interface)
- 1* SIM Card Socket

Graphics

- Mali T860MP4 GPU,OpenGL ES1.1/2.0/3.0, OpenCL1.2, DirectX11.1
- 1* HDMI (Max Resolution: 3840x2160@60Hz)
- 1* LVDS (Max Resolution: 1920x1080@60Hz)
- 1* eDP (Max Resolution: 4096x2304@60Hz)
- Support Triple Displays

Audio

Dual channel HD audio:ALC5640

Rear I/O

- 1* DC Jack (12V)
- 2* USB3.0 (Co-lay OTG)
- 1* HDMI
- 1* Audio (Line-out +MIC)
- 2* RJ45

Watchdog Timer

- From Super I/O to drag RESETCON#
- 256 segments (0~255 sec)

Compliance

CE, FCC, LVD, RoHS, REACH

Warranty

2 Years Limited Warranty

* Specifications subject to change without notice, not responsible for typographical errors. Does not include HDD or OS.

OS Support List

SKU	Android	Linux
RK3128	5.1	
RK3288	9.0	Debian 9.0
RK3328	7.1	
RK3399	7.1	Debian 9.0

Standard Accessories

Parts Number	Description	Parts Number	Description
-----	JR3399XH-2C M/B		