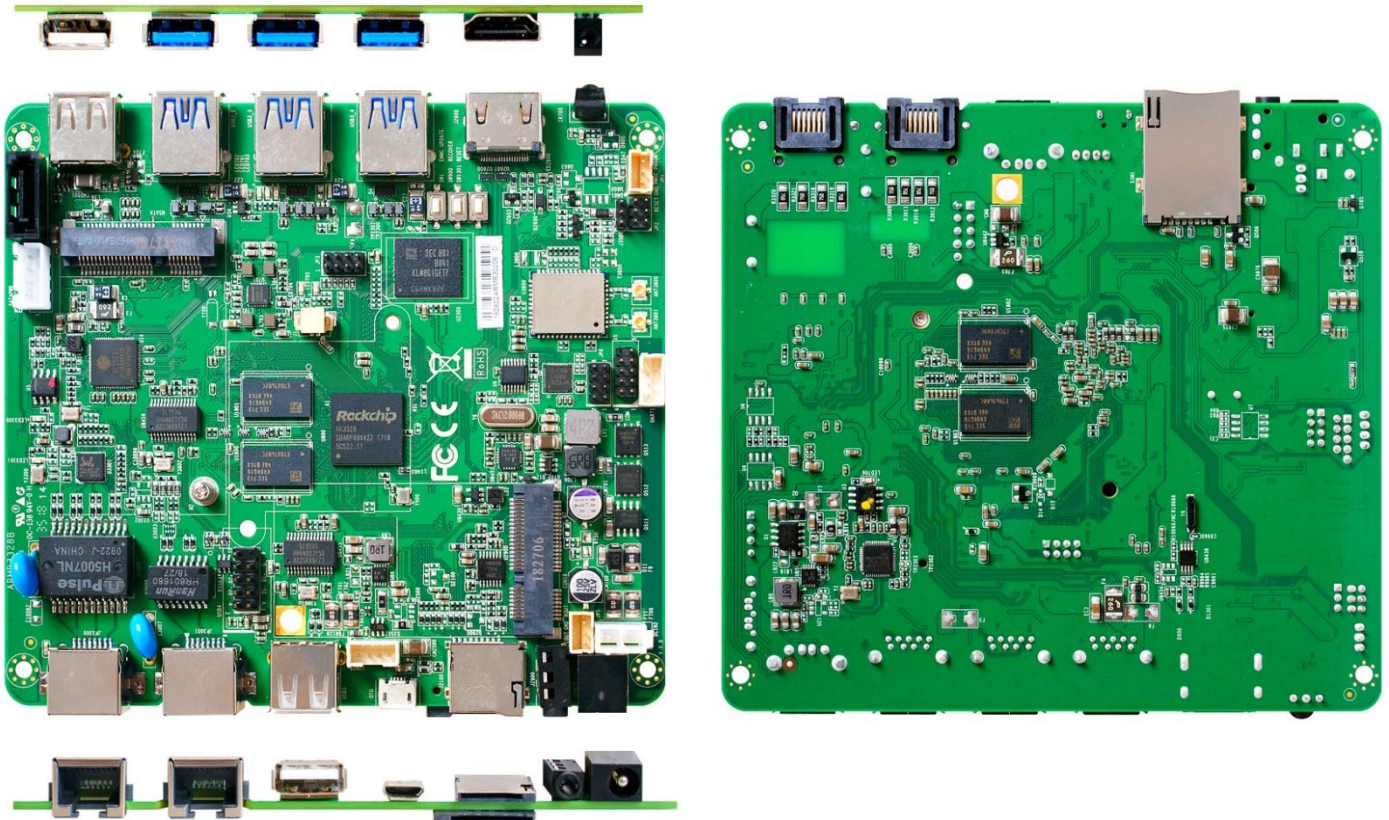


JR3328B-2N

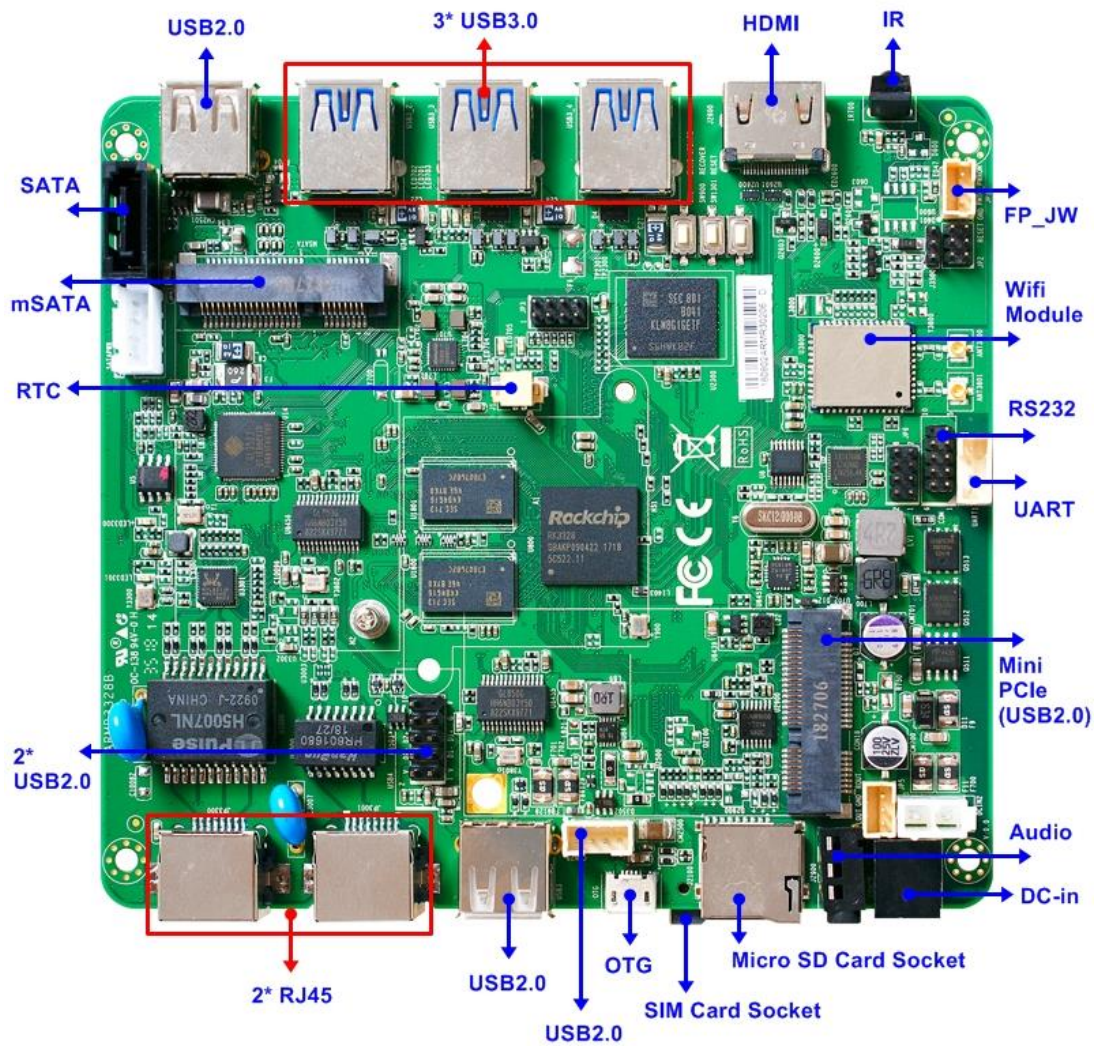
Rockchip® ARM Cortex A53 RK3328, 1 * Micro SD Card Socket, 1 * SIM Card Holder, 1 * HDMI, Bluetooth, WIFI, Android 7.1



Features

1. Rockchip® ARM Cortex A53 RK3328 Quad-core 1.5GHz
2. DRAM : 2GB DDR3L 1600MHz on-board (Max. 4GB)
3. FLASH ROM : 8GB (Max. 32GB)
4. 1 * Micro SD Card Socket (Max. 64G)
5. Support 1 * mSATA, 1 * Mini PCIe (USB interface)
6. 2 * RJ45, 3 * USB3.0, 4 * USB2.0, 1 * OTG, 1 * SIM Card holder, 1 * RS232
7. 1 * HDMI (3840 x 2160@60Hz)
8. Support Android 7.1, Linux 4.4
9. uTX Form Factor (130mm * 120mm)

Internal Diagram



Specifications

Model / Part Number	
Model	- JR3328B-2N
Part Number	- JR3328B-2N
Form Factor	
Dimensions	- uTX SBC (130 * 120mm, 5.12" * 4.72")
Processor System	
Processor/CPU	- Rockchip® ARM Cortex A53 RK3328 Quad-core 1.5GHz SoC Processor
GPU	- Mali-450MP2, Support OpenGL ES1.1/2.0
Memory	
DRAM	- 2GB DDR3L 1600MHz on-board (Max. 4GB)
FLASH ROM	- 8GB (Max. 32GB)
Ethernet	
Ethernet	- 1 * 10/100 Mbps internal FE PHY - 1 * Realtek RTL8211F-CG /10/100/1000Mbps

Wifi	- RTL8822BS chip_802.11 a/b/g/n/ac, 5.0G & BT 4.1
3G/4G/LTE	- 1 * SIM Card Holder
Graphics	
HDMI	- 1 * HDMI (3840 x 2160@60Hz)
Multi Display	- Single display
Expansion Slot	
Mini PCIe	- 1 (USB2.0 Interface)
mSATA	- 1
Micro SD Socket	- 1 (Max. 64G)
Special Features	
IR Support	- Yes
OS Support	- Android 7.1, Linux 4.4
Watchdog Timer	- 0~255 Sec./Min. programmable
Application	- Digital signage, NAS
I/O Port	
External I/O	- 1* HDMI - 2* RJ45 - 3* USB3.0 - 2* USB2.0 - 1* OTG - 1* Audio - 1* DC-in
Internal I/O	- 2* USB2.0 - 1* RS232 - 1* SATA connector
Power Requirements	
Input PWR	- 12V DC-in - AT : Directly PWR on as Power input ready - ATX : Press Button to PWR on after Power input ready
Certifications	
Certifications	- RoHS, CE, FCC, CE-LVD
Environment	
Temperature	- Operating: -10°C ~ 60°C with 0.7 m/s air flow - Storage: -20°C ~ 70°C
Warranty	
Warranty	- 1 Year Limited Warranty

*Specifications subject to change without notice, not responsible for typographical errors. Does not include HDD or OS.

Optional Accessories

Part Number	Description
	JR3328B-2N
	JR3328B-2N M/B User's Manual
G01-COM-H2M22-1F	1* COM Cable
G01-SATA-BK-B-2F	1* SATA Cable

Mechanical Drawings (Unit = mm)