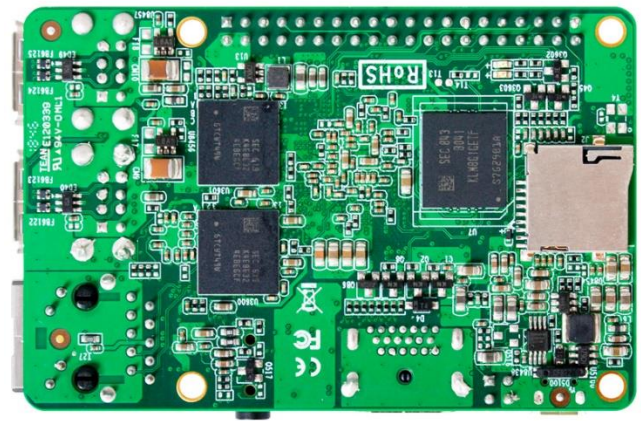
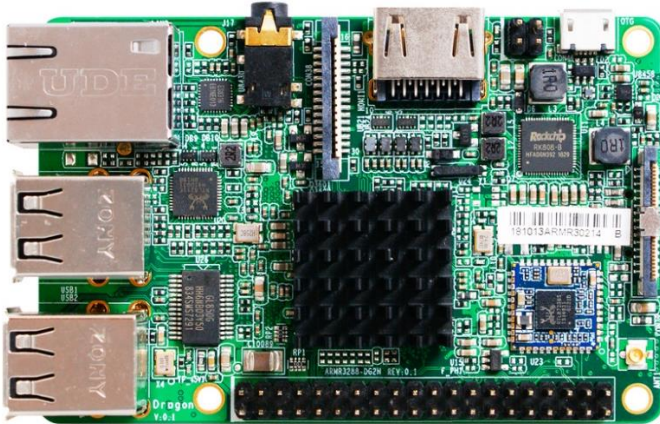


# JR3288-DG2N (Jan. '19 Launch)

Rockchip® ARM Cortex A17 RK3288W, 1.8" Size, Android 5.1

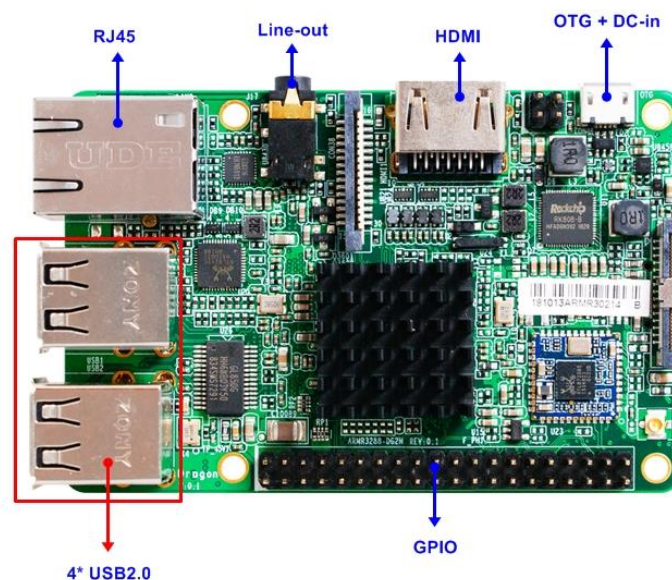


## Features



1. Rockchip® ARM Cortex A17 RK3288W Quad-core 1.8GHz
2. Onboard 1333 /2GB DDR3L DRAM (Max. 4GB)
3. 8G Flash ROM (Max 32GB)
4. Support 26bit GPIO
5. 1\* HDMI (3840 x 2160@24Hz)
6. 1\* RJ45, 4\* USB2.0, 1\* OTG, 1\* AUDIO
7. 1.8" Form Factor (85\*56mm)

## Internal Diagram



## Specifications

Model / Part Number	
Model	- JR3288-DG2N
Part Number	- JR3288-DG2N
Form Factor	
Dimensions	- 1.8" SBC (85* 56mm, 3.35" * 2.21")
Processor System	
Processor/CPU	- Rockchip® ARM Cortex A17 RK3288W Quad-core 1.8GHz SoC Processor
GPU	- Mali-T764 GPU
Memory	
DRAM	- 2GB DDR3L 1333MHz on-board (Max. 4GB)
FLASH ROM	- 8GB (Max. 32GB)
Ethernet	
Ethernet	- 1 * Realtek RTL8211E-VB / 10/100/1000Mbps
Wifi	- Optional
3G/4G/LTE	- N/A
Graphics	
HDMI	- 1 * HDMI (1920 x 1080@60Hz)
Multi Display	- Single display
Expansion Slot	
Micro SD Socket	- 1 (Max. 64G)
Special Features	
IR Support	- N/A
OS Support	- Android 5.1, Linux 4.4
Watchdog Timer	- 0~255 Sec./Min. programmable
Application	- Digital signage, Face recognition system
I/O Port	
External I/O	- 1* HDMI - 1* RJ45 - 4* USB2.0 - 1* OTG - 1* AUDIO
Internal I/O	- 26bit GPIO
Power Requirements	
Input PWR	- 5V DC-in - AT : Directly PWR on as Power input ready - ATX : Press Button to PWR on after Power input ready

<b>Certifications</b>	
Certifications	- RoHS, CE, FCC, CE-LVD
<b>Environment</b>	
Temperature	- Operating: -10°C ~ 60°C with 0.7 m/s air flow - Storage: -20°C ~ 70°C
<b>Warranty</b>	
Warranty	- 1 Year Limited Warranty

\*Specifications subject to change without notice, not responsible for typographical errors. Does not include HDD or OS.

## Optional Accessories

<b>Part Number</b>	<b>Description</b>
	JR3288-DG2N
	JR3288-DG2N M/B User's Manual