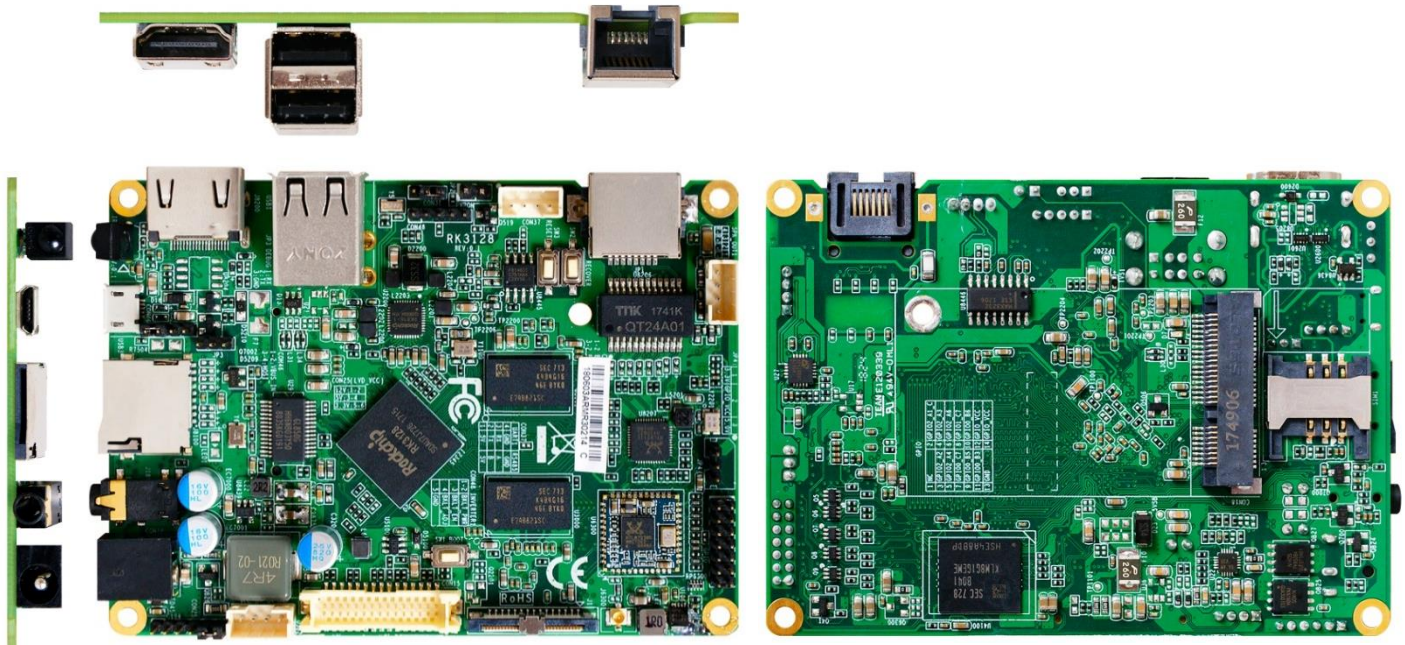


JR3128-1A

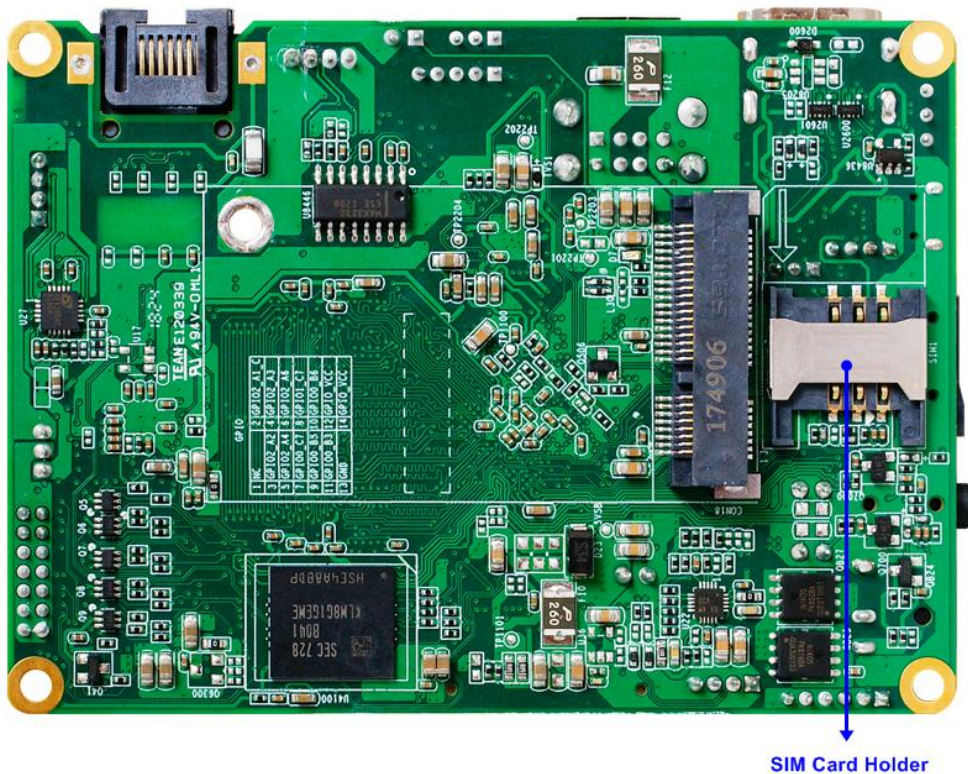
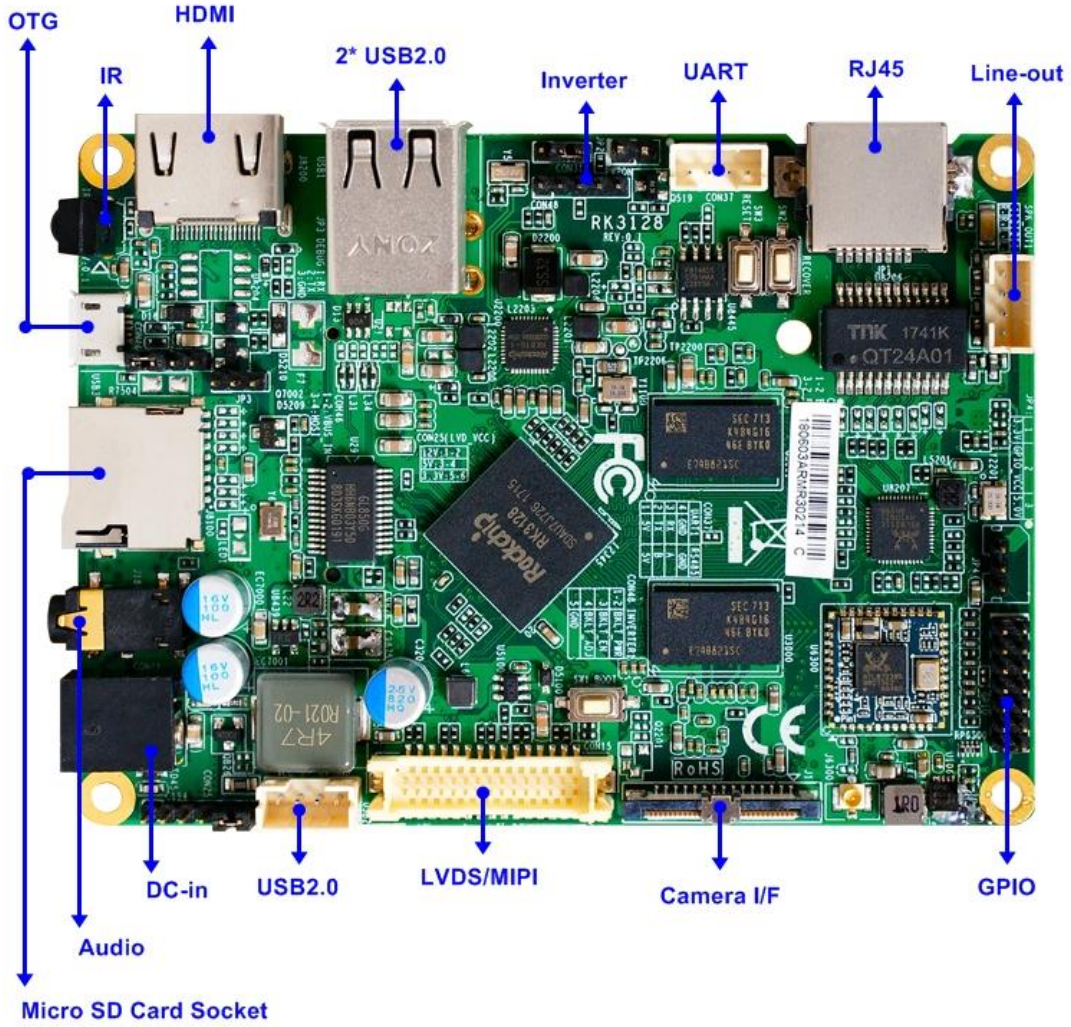
Rockchip® ARM Cortex A7 RK3128, 1* mPCIe, 1 * Micro SD Card socket, HDMI/LVDS/MIPI(option), Bluetooth, WIFI, Android 5.1, Linux 4.4



Features

1. Rockchip® ARM Cortex A7 RK3128 Quad-core 1.2GHz
2. DRAM : 1GB DDR3L 1066MHz on-board (Max. 2GB)
3. FLASH ROM : 4GB (Max. 32GB)
4. 1* RJ45, 3* USB2.0, 1* OTG, 1* Audio, 1* Micro SD Card socket, 1* MIPI(CSI), 1* GPIO, 1* Speaker Out, 1* RS232, 1* SIM Card holder
5. 1* HDMI (1920 x 1080@60Hz)
6. 1* 24 bits Single CH LVDS (1280 x 800@60Hz)
7. Support Android 5.1, Linux 4.4
8. 2.5" Form Factor (100mm * 72mm)
9. Application for IOT & Equipment : Smart Meters, Residential Access Control, Agricultural Automation Equipment, Lottery machine, vending machine, coffee machine...etc.

Internal Diagram



Specifications

Model / Part Number	
Model	- JR3128-1A
Part Number	- JR3128-1A
Form Factor	
Dimensions	- 2.5" SBC (100 * 72mm, 3.94" * 2.83")
Processor System	
Processor/CPU	- Rockchip® ARM Cortex A7 RK3128 Quad-core 1.2GHz SoC Processor - L2 Cache- 256K
GPU	- Mali-400MP2 GPU, support OpenGL ES1.1/2.0
Memory	
DRAM	- 1GB DDR3L 1066MHz on-board (Max. 2GB)
FLASH ROM	- 4GB (Max. 32GB)
Ethernet	
Ethernet	- 1* Realtek RTL8211E /10/100/1000Mbps
Wifi	- Module, RTL8723BS chip_802.11 b/g/n, 2.4G & BT 4.0
3G/4G/LTE	- SIM Card Holder
Graphics	
HDMI	- 1* HDMI (1920 x 1080@60Hz)
LVDS	- 1* 24 bits Single CH LVDS (1280 x 800@60Hz)
MIPI	- 1 (optional)
Multi Display	- Single display
Expansion Slot	
Mini PCIe	- 1 (USB interface)
Micro SD Socket	- 1 (Max. 64GB)
SIM Card Holder	- 0
Special Features	
IR Support	- Yes
OS Support	- Android 5.1, Linux 4.4
Application	- IOT & Equipment : Smart Meters, Residential Access Control, Agricultural Automation Equipment, Lottery machine, vending machine, coffee machine...etc.
I/O Port	
External I/O	- 1* HDMI - 1* RJ45 - 2* USB2.0 - 1* OTG - 1* Audio

	- 1* DC-in - 1* Micro SD Socket
Internal I/O	- 1* LVDS - 1* MIPI CSI (Camera Serial Interface) - 1* USB2.0 - 1* GPIO - 1* Speaker Out - 1* RS232
Power Requirements	
Input PWR	- 12V DC-in - AT: Directly PWR on as Power input ready
Certifications	
Certifications	- RoHS, CE, FCC, CE-LVD
Environment	
Temperature	- Operating: -10°C ~ 60°C with 0.7 m/s air flow - Storage: -20°C ~ 70°C
Warranty	
Warranty	- 1 Years Limited Warranty

*Specifications subject to change without notice, not responsible for typographical errors. Does not include HDD or OS.

Optional Accessories

Part Number	Description
	JR3128-1A
	JR3128-1A M/B User's Manual