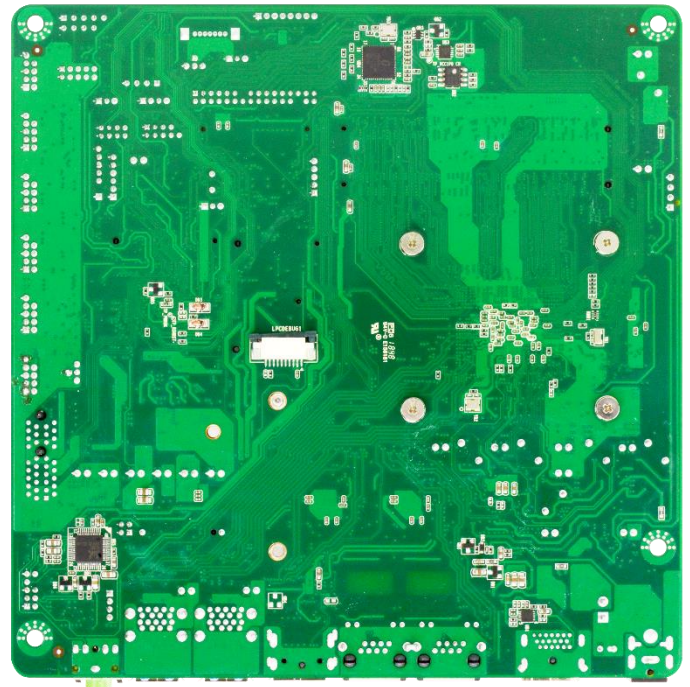
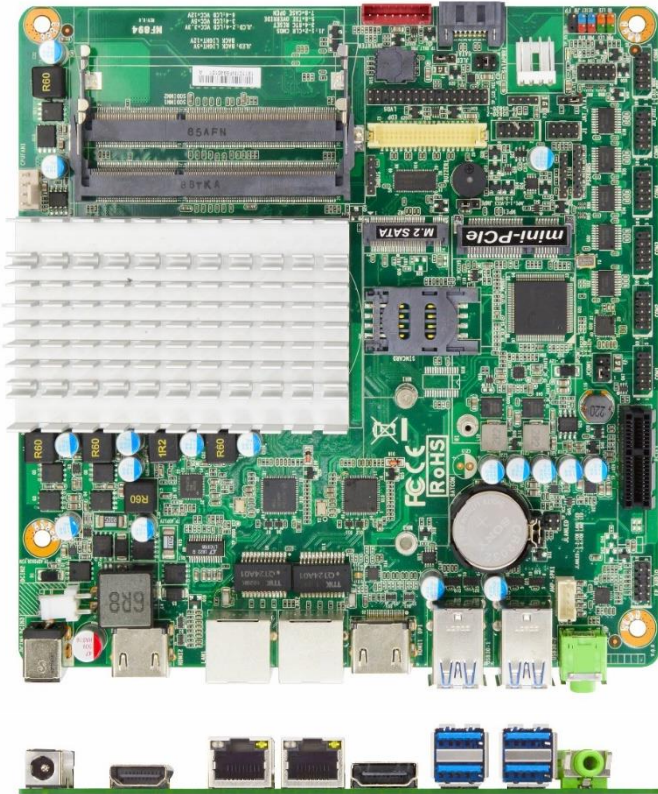




## JNF894-3455

**Slim Mini-ITX Embedded Motherboard with Intel® Apollo Lake SoC Processor, DDR3L up to 8GB, 9~36V wide voltage solution**



### Overview



The JETWAY JNF894-3455 is Slim Mini-ITX form factor board adopts the Intel® Apollo Lake SoC Processor. The board supports DDR3L 1867Mhz SODIMM memory, up to 8GB. Featuring the integrated two Intel Gigabit Ethernet controllers, the JNF894 offers 10/100/1000Base-TX Ethernet devices for network transmission. SATAIII (6Gb/s) interface, one M.2 (M-key, 2242/2280) and 32 GB eMMC offer storage devices. One Mini PCIe interface, four USB3.0 ports, three USB2.0 ports and six COM ports provide versatile expansion. The JNF894 offers two HDMI interface which can support max. 3840x2160@30Hz resolution. Because of the above features, JNF894 is one of the best selections for industrial automation and industrial PPC applications.

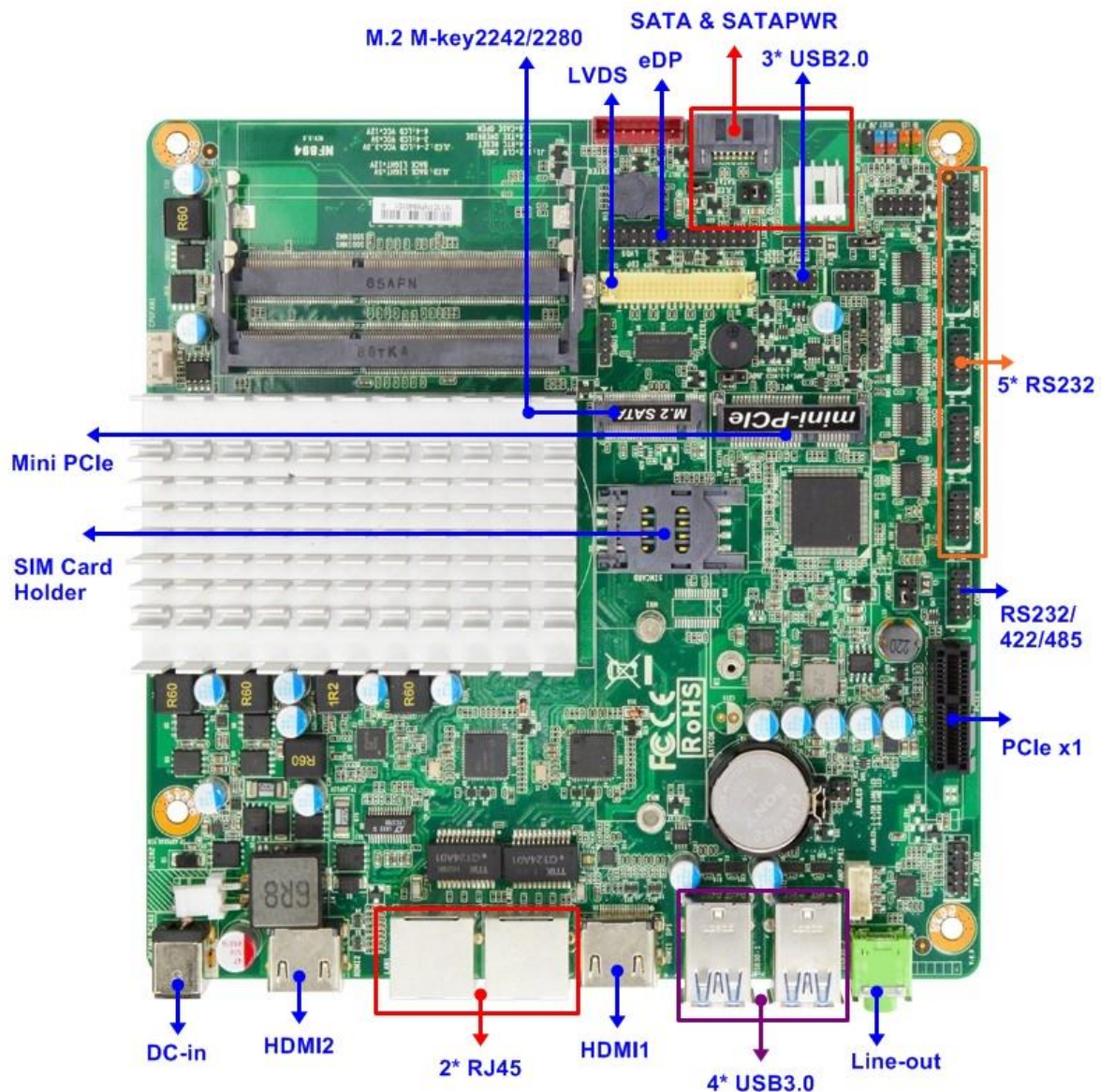
## Features

1. Intel® Apollo Lake SoC Processor
2. 2 \* DDR3L SODIMM Up to 8 GB
3. 2 \* 10/100/1000 Base-TX Ethernet Ports
4. Support 2 \* HDMI + 1 \* eDP + 1 \* LVDS display
5. 6 \* COM, 4 \* USB3.0 & 3 \* USB2.0
6. 1 \* PCIe x1 slot, 1\* Mini PCIe slot (1\* full size),  
1 \* M.2 (M-key, 2242/2280)
7. Support 1 \* SATA III (6Gb/s), 32 GB eMMC
8. 9~36V DC IN

## Application

- Industrial Automation
- Industrial Panel PC
- KIOSK
- Digital Signage

## Internal Diagram



## Specifications

<b>Model</b>	JNF894-3455
<b>Form Factor</b>	
Dimensions	- Mini-ITX (6.7-in * 6.7-in, 170 * 170mm)
<b>Processor System</b>	
CPU	- Intel Apollo Lake SoC Processor
Core Number	- (by CPU)
Max Speed	- (by CPU)
L2 Cache	- (by CPU)
Chipset	- SoC
BIOS	- AMI Flash ROM
<b>Expansion Slot</b>	
PCI	- 0
Mini-PCIe	- 1 (full size)
mSATA	- 0
PCIe	- 1 * PCIe x1
M.2	- 1 (M-key, 2242/2280)
CFast Card Socket	- 0
CF Card Socket	- 0
SIM Card Holder	- 1
<b>Memory</b>	
Technology	- Dual CH DDR3L 1867MHz SDRAM
Max.	- 8GB
Socket	- 2 * SO-DIMM
<b>Graphics</b>	
Controller	- Intel® HD Graphics
VRAM	- Shared Memory
VGA	- 0
LVDS	- 1 (max. 1920 x 1080@60Hz resolution) (Selectable with eDP, not working while using LVDS)
eDP 1.3	- 1 (max. 3840 x 2160@60 Hz resolution) (Selectable with LVDS, not working while using eDP)
HDMI 1.4	- 2 (Max. Resolution : 3840 x 2160@24Hz) (one option with DP, Default HDMI)
DVI-D	- 0
DisplayPort 1.2	- 1 (Max. Resolution : 4096 x 2160@60Hz) (option with HDMI)
Multi Display	- Triple Displays
<b>Ethernet</b>	

Ethernet	- 10/100/1000 Mbps
Controller	- PCIe GbE LAN : Intel I211-AT
Connector	- 2 * RJ 45
<b>Audio</b>	
CODEC	- HD Audio : Realtek ALC662VD
Channel	- 2 Channel
<b>STORAGE</b>	
SATA	- 1 * SATAIII (6.0Gb/s)
eMMC	- 32 GB (option)
M.2	- 1 * M-key 2242/2280 for SATA interface
<b>Rear I/O</b>	
VGA	- 0
DVI-D	- 0
HDMI	- 2 (default)
DisplayPort	- 1 (option with one HDMI)
Ethernet	- 2
USB	- 4 * USB 3.0
Audio	- 1 ( Line-Out)
Serial	- 0
eSATA	- 0
PS/2	- 0
DC-input	- 1
<b>Internal Connector</b>	
USB	- 3 * USB 2.0
PS/2	- 1
LVDS / inverter	- 1
eDP	- 1
VGA	- 0
Serial	- 6 (COM1 support RS232/422/485 w/ power)
SATA	- 1 * SATAIII (6.0Gb/s)
mPCIe	- 1 (full size)
Parallel	- 0
mSATA	- 0
M.2	- 1 (M key-2242, 2260)
GPIO	- 1 (8 bit)
Chassis intrusion	- 1
Audio Header	- 1

SMBUS / I2C	- 1
AT mode	- 1
TPM	- 1 (on board option)
Others	- 0
<b>Watchdog Timer</b>	
Output	- From Super I/O to drag RESETCON#
Interval	- 256 segments, 10sec...255min
<b>Power Requirements</b>	
Input PWR	- 9~36V DC-in
Power On	AT/ATX Supported - AT : Directly PWR on as Power input ready - ATX: Press Button to PWR on after Power input ready
<b>Certifications</b>	
Certifications	- CE, FCC, RoHS, REACH
<b>Environment</b>	
Temperature	- Operating: 0°C ~ 60°C(with 0.7m/s air flow)
	- Storage: -20°C ~ 85°C
	- eMMC: 0°C ~ 70°C
<b>Warranty</b>	
Warranty	- 2 Years Limited Warranty
<b>Packing</b>	
Packing	- Net Weight: - Gross Weight: - Color Box dimension:

\*Specifications subject to change without notice, not responsible for typographical errors. Does not include HDD or OS.

## Optional Accessories

Part Number	Description
	JNF894 M/B
G03-NF894-F	IPC NF894 User's Manual
G02-DVD24-A5-WF	CD Driver
F04-MB-069-F	I/O Shield

# Mechanical Drawings (Unit = mm)

