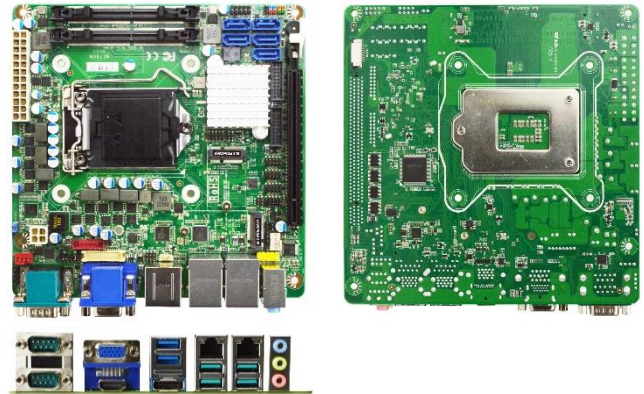


JNF796M-Q370

Mini-ITX Embedded Motherboard, 8th/9th Generation Intel® Core™ i7/ i5 /i3, Pentium® LGA1151 Socket Processor, Max. 65W TDP. Support Intel AMT

1. Intel® 8th/9th LGA1151 Socket Processor (Max. 65W TDP)
2. 2* DDR4 2400/2666MHz SO-DIMM up to 64GB
3. 2* 10/100/1000 Base-TX Ethernet Ports
4. 1* HDMI, 1* DP, 1* VGA, 1* 24-bits Dual CH LVDS
5. 6* COM (COM1/2 support RS232/422/485), 4* USB3.1 Gen.2, 6* USB3.1 Gen.1, 2* USB2.0
6. 1* PCIe x16 slot, 1* M.2 M-key 2242/2280 (SATA/PCIex4) support NVMe, 1* M.2 E-key 2230 (PCIex1/USB2.0) support CNVi
7. 5* SATAIII (6Gb/s) support RAID 0, 1, 5, 10
8. Support onboard TPM 2.0 (option)



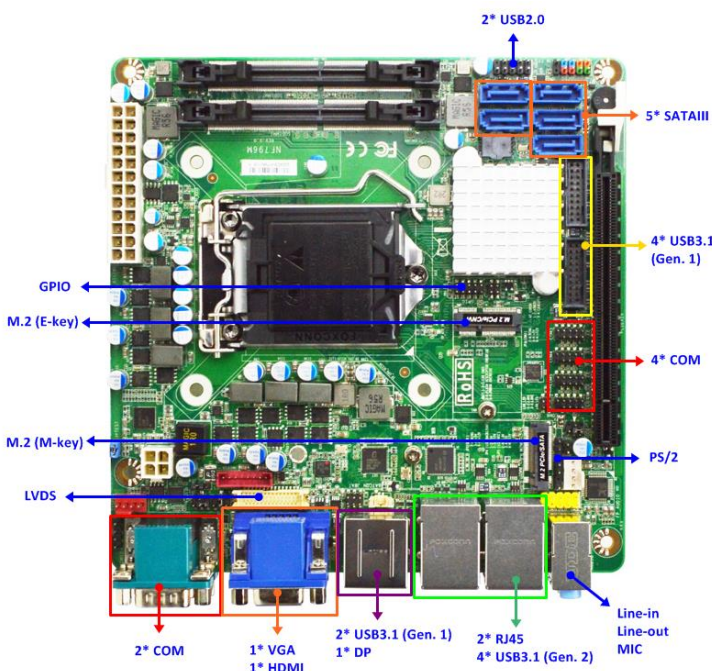
Overview

The JETWAY JNF796M-Q370 is Mini-ITX form factor board adopts the Intel® 8th/9th generation Core i7/i5/i3, Pentium and Celeron Processor. The board supports two SO-DIMM DDR4 2400/2666MHz memory, up to 64GB. Featuring the integrated Intel® Gigabit Ethernet controller, the JNF796M-Q370 offers two 10/100/1000Base-TX Ethernet devices for network transmission. Five SATAIII (6Gb/s) interface and one M.2 M-key 2242/2280 (SATA/PCIex4) support NVMe offer storage devices. One M.2 E-key 2230 (PCIex1/USB2.0) support CNVi, four USB3.1 Gen.2 ports, six USB3.1 Gen.1 ports, two USB2.0 ports and six COM port provide versatile expansion. The PCIex16 slot can support Jetway riser card for different expansion. The JNF796M-Q370 offers one HDMI.1.4 port, one DP1.4 port, one VGA port and one 24-bits Dual CH LVDS which can support 3 independent displays. Because of the above features, JNF796M-Q370 is suitable for Edge Computing, Digital Signage, Industrial PCs, Factory Automation, Public Sector, Digital Security and Surveillance applications.

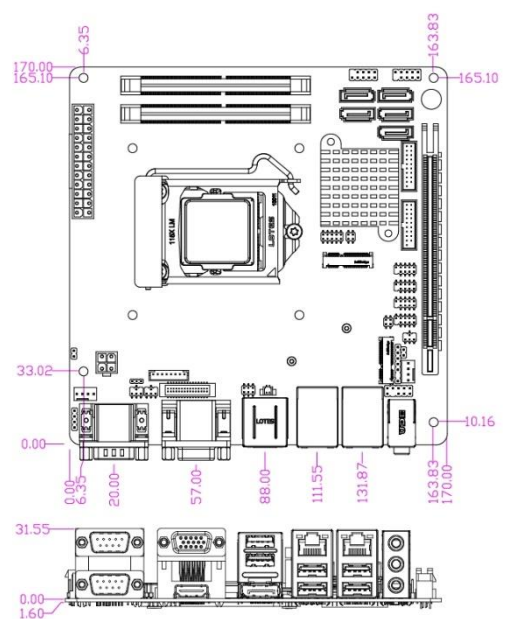
Application

Edge Computing / Digital Signage / Industrial PCs / Factory Automation / Public Sector / Digital Security / Surveillance

I/O Diagram



Mechanical Drawings (Unit = mm)



Specifications

Model	Form Factor
JNF796M-Q370	Mini-ITX (6.7-in * 6.7-in, 170 * 170mm)
Processor System	Expansion Slot
<ul style="list-style-type: none">Intel® 8th/9th LGA 1151 Socket Core i7/i5/i3/Pentium/Celeron Processor (Max. 65W TDP)Intel Q370 Express chipsetAMI 128Mb Flash ROM BIOS	<ul style="list-style-type: none">1* M.2 E-key 2230 (PCIex1/USB2.0) support CNVi1* PCIex16 slot
Memory	Graphics
2* Dual CH DDR4 2400/2666MHz SDRAM SO-DIMM up to 64GB	<ul style="list-style-type: none">Intel® HD Graphics, shared memory1* VGA (Max Resolution: 1920x1200@60Hz)1* LVDS (Max Resolution: 1920x1200@60Hz)1* HDMI 1.4 (Max Resolution: 4096x2160@30Hz)1* DP (Max Resolution: 4096x2304@60Hz)Support Triple Displays
Ethernet	Storage
1 * Intel i219LM & 1 * Intel i211AT GbE	<ul style="list-style-type: none">5* SATAIII support RAID 0, 1, 5, 101* M.2 M-key 2242/2280 (SATA/PCIex4) support NVMe
Rear I/O	Internal Connector
<ul style="list-style-type: none">1* VGA1* HDMI1* DP2* RJ45 Ethernet4* USB 3.1 (Gen. 2)2* USB3.1 (Gen. 1)Line-in, Line-out, MIC2* COM (COM 1/2 support RS232/422/485)	<ul style="list-style-type: none">4* USB3.1 (Gen. 1)2* USB 2.01* PS/21* LVDS / Inverter4* COM5* SATAIII1* M.2 E-key 2230 (PCIex1/USB2.0) support CNVi1* M.2 M-key 2242/2280 (SATA/PCIex4) support NVMe1* GPIO (8 bit)1* Chassis intrusion1* Audio Header1* SMBUS1* AT modeSupport onboard TPM2.0 (option)
Audio	Watchdog Timer
6 channel HD audio: Realtek ALC662VD	<ul style="list-style-type: none">From Super I/O to drag RESETCON#256 segments (10sec ~ 255min)
Power	Compliance
ATX PWR (4+24 pin), AT/ATX Supported - AT: Directly PWR on as Power input ready - ATX: Press Button to PWR on after Power input ready	CE, FCC, LVD, RoHS, REACH
Temperature	OS Support
<ul style="list-style-type: none">Operating: 0°C ~ 60°CStorage: -20°C ~ 85°CHumidity: 10% ~ 90% RH @40°C (non-condensing)	Windows 10
Warranty	
2 Years Limited Warranty	

* Specifications subject to change without notice, not responsible for typographical errors. Does not include HDD or OS.

Accessories

Parts Number	Description	Parts Number	Description
-----	JNF796M M/B	G01-COM-H2M20-1F	COM cable
F04-MB-073-F	JNF796 I/O shield	G01-SATA3-BL-1F	SATAIII cable