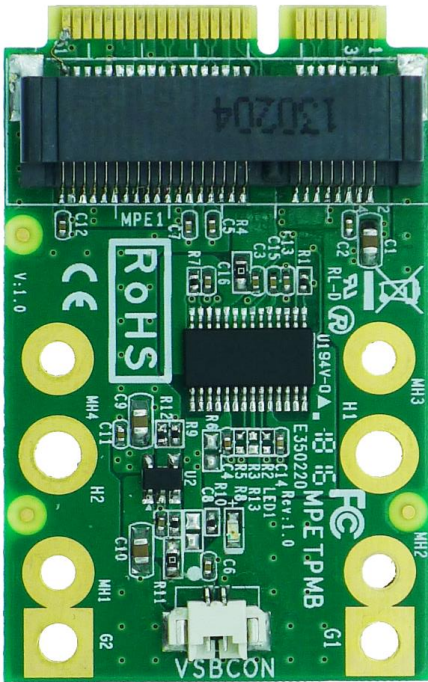


ADMPETPMB2



Dimension: 30.00 x 50.95 mm

Chipset: Nuvoton – TPM controller

Feature:

1. Comply with TPM v2.0 standard
2. Support PC standby mode

Interface:

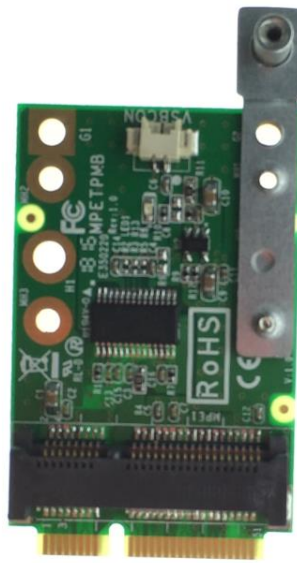
Mini SATA

Accessories:

1. Standby power cable * 1 pcs
p.s. The power cable connect with M/B USB port. Please be careful to install it. Incorrect installation could damage this daughter board.



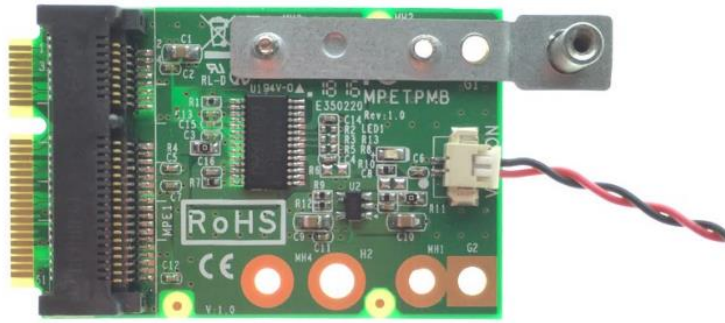
Bracket at the left side



Bracket at the right side



Mount another m-SATA module



Insert USB power cable

Appendix : List of Compatible Products

NF9T
NF533
NU93
NP93
NF542
NF541