



## ADMPEOX4CA

**Dimension:** 30.00 x 50.95 mm

**Chipset:** OXFORD - OXPCIe954 serial port controller

**Feature:**

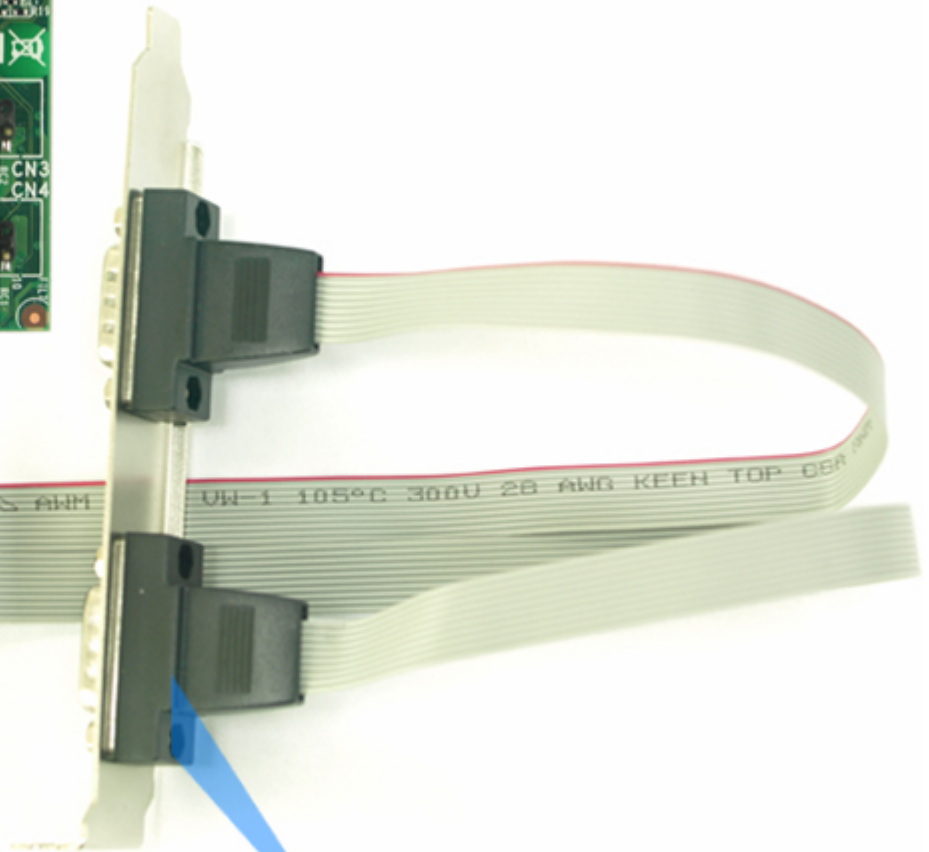
- 1. Support 3 \* RS232 ports & 1\* RS232/RS-422/RS-485 port
- 2. Asynchronous baud rates up to 15Mbps

**Interface:**

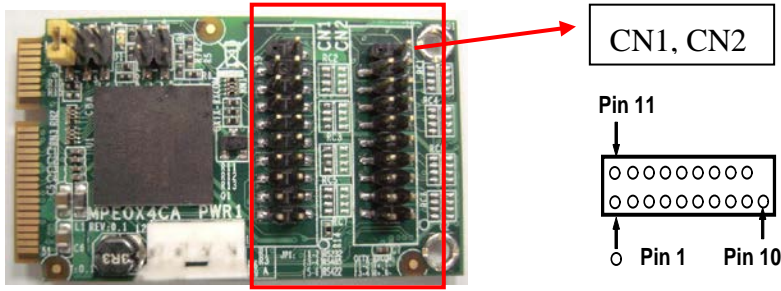
Mini PCI-E

**Accessories:**

- 1. 25cm COM cables W / Bracket \* 2 sets

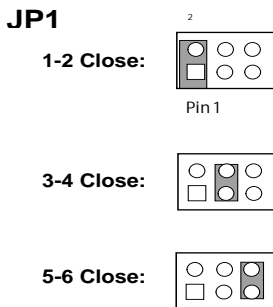
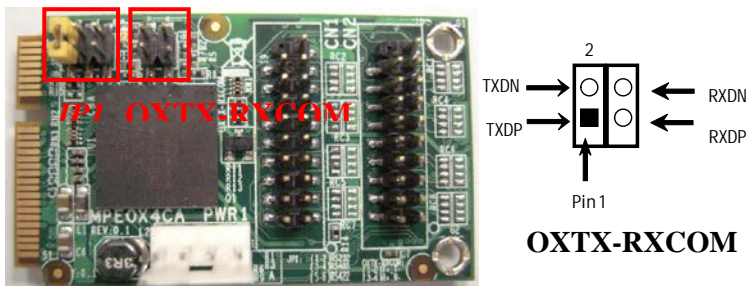


1. COM port pin header :



Pin Number	Pin Define	Pin Number	Pin Define
Pin1	-DCD1	Pin11	-DSR1
Pin2	SIN1	Pin12	-RTS1
Pin3	SOUT1	Pin13	-CTS1
Pin4	-DTR1	Pin14	-RI1
Pin5	GND	Pin15	
Pin6	-DCD2	Pin16	-DSR2
Pin7	SIN2	Pin17	-RTS2
Pin8	SOUT2	Pin18	-CTS2
Pin9	-DTR2	Pin19	-RI2
Pin10	GND		

2. RS485/RS422 :



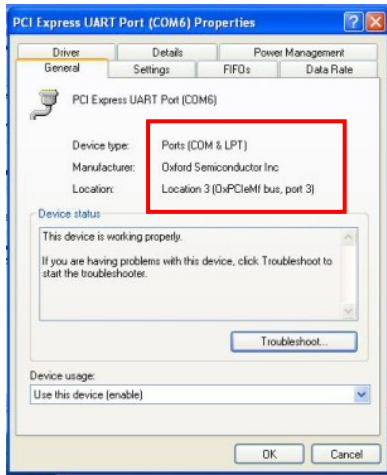
1-2 short	RS232
3-4 short	RS485
5-6 short	RS422

MPEOX4CA support quad series port ( port0~3).

※port 3 support multi function with RS232/485/422 ◦

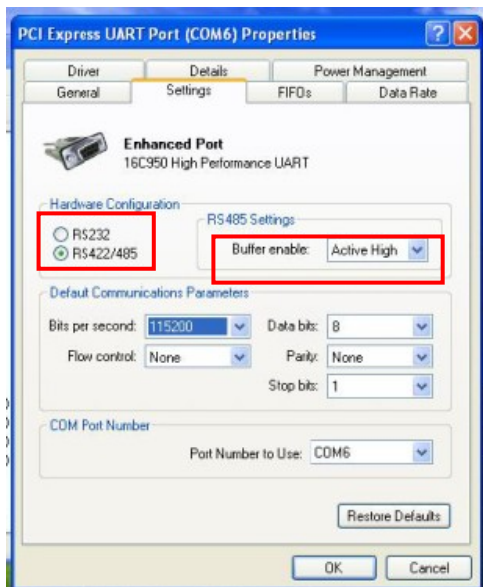
When RS485/422 , must change Hardware configuration to RS485 and Buffer enable to “ active high ” ◦

Step1: Find the port3 device on the device management

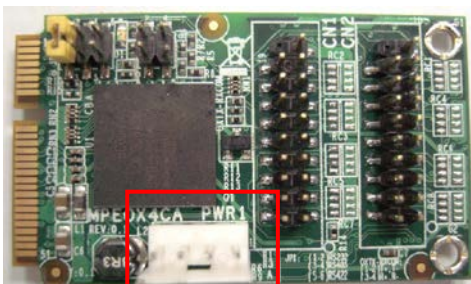


Step2:

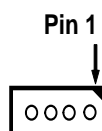
1. Hardware configuration change to “ RS422/485 “
2. RS485 settings change to “ Active high “



### 3. POWER pin Header ( PWR1) :



Pin1	5VCC
Pin2	GND
Pin3	GND
Pin4	NC



# PWR1,RS232 power source , must be connected.